



**Australasian Division of the International Academy of Pathology Limited**

ABN 73 008 593 815

**PO Box 74, Cherrybrook, NSW 2126**

**Tel: 02 9894 6811 [www.iap-aus.org.au](http://www.iap-aus.org.au)**

## **IAP Companion Meeting Friday 30th May 2025**

### **Orell Cytology Companion Session**

#### **Convenors**

**Siaw Ming Chai**

PathWest Laboratory Medicine, Perth, WA, Australia

**Anita Muljono**

Douglass Hanly Moir Pathology, Macquarie Park, NSW

#### **Cases Presented within Lecture**

**Min En Nga**

National University Hospital, Singapore &  
Yong Loo Lin School of Medicine, National University of Singapore

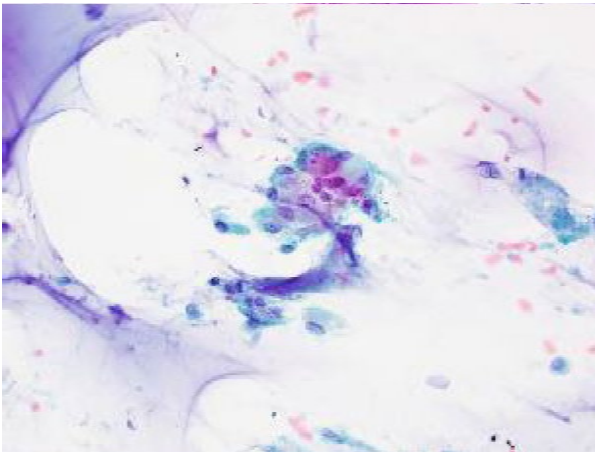
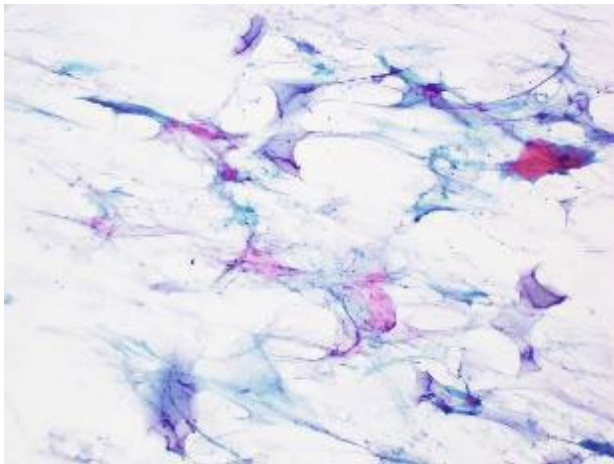
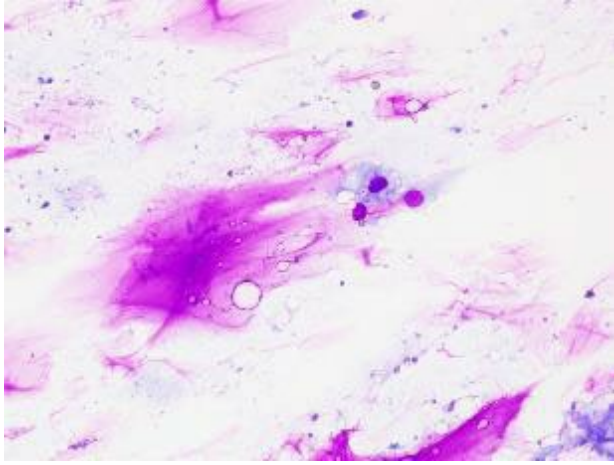
***The most important thing cytology has taught me this past year***

**Case 1:** A submental lump

#### **Clinical History:**

25 year old female with a 5-month history of a right submental lump

***Note:*** All images are subject to copyright and are only for personal use, and not for sharing or distribution.

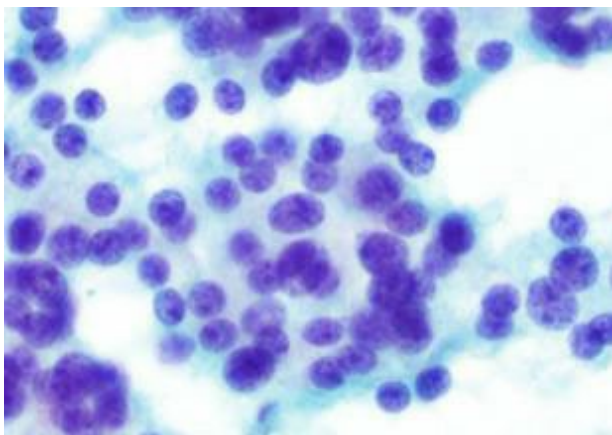
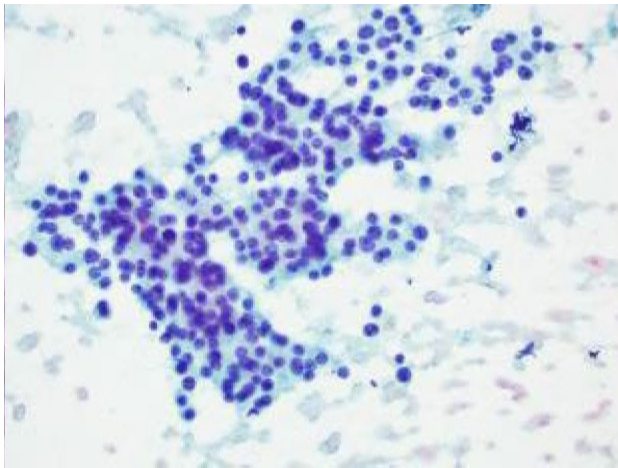
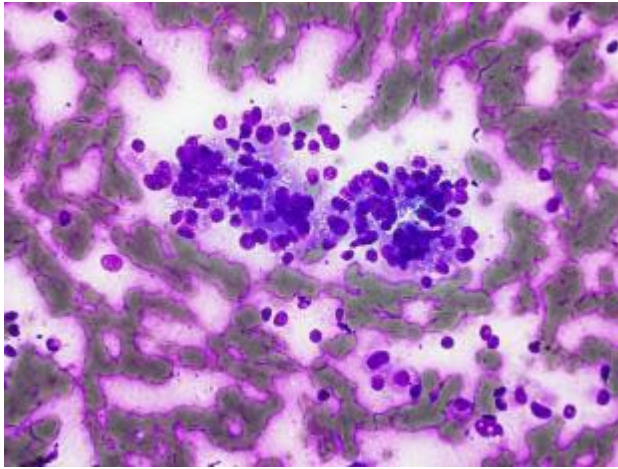


**Note:** All images are subject to copyright and are only for personal use, and not for sharing or distribution.

## Case 2: A pancreatic mass

### Clinical History:

A 56 year old male with vague abdominal pain, and a pancreatic body mass. EUS-guided FNA.

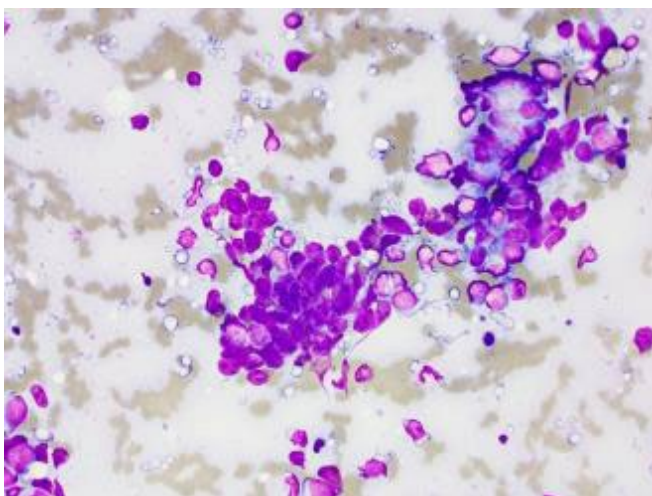
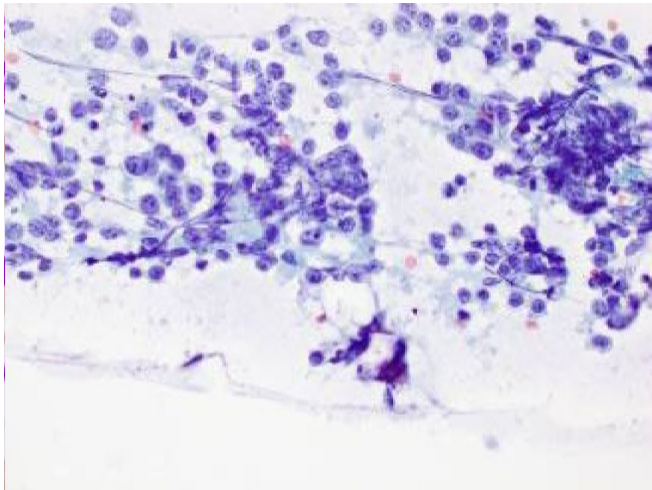
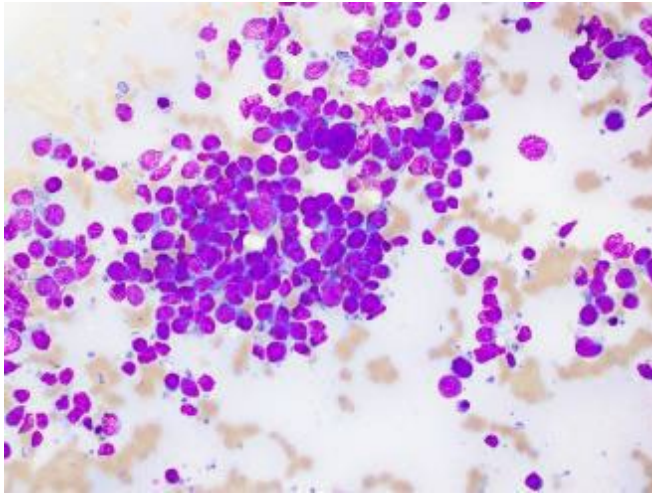


**Note:** All images are subject to copyright and are only for personal use, and not for sharing or distribution.

### Case 3: An axillary lymph node

#### Clinical History:

A 73 year old female with an enlarged axillary lymph node, and recent diagnosis of nasopharyngeal malignancy.



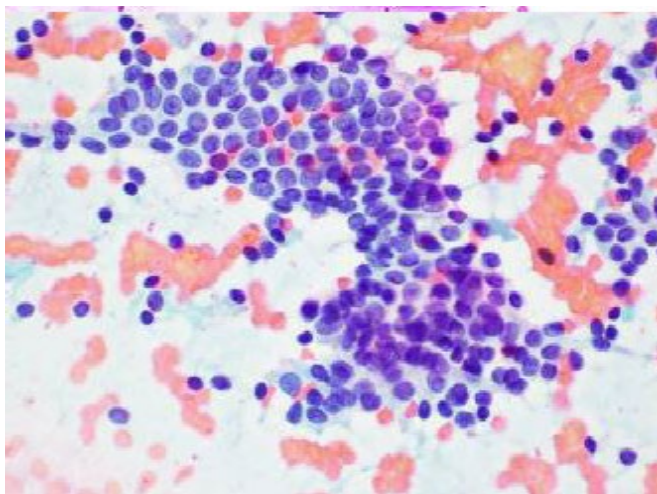
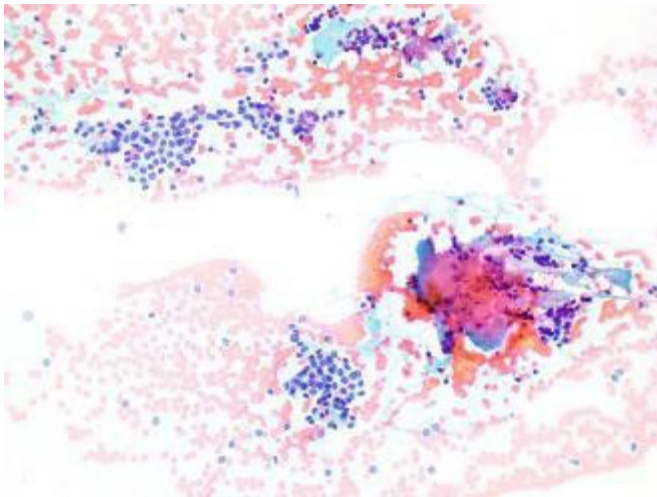
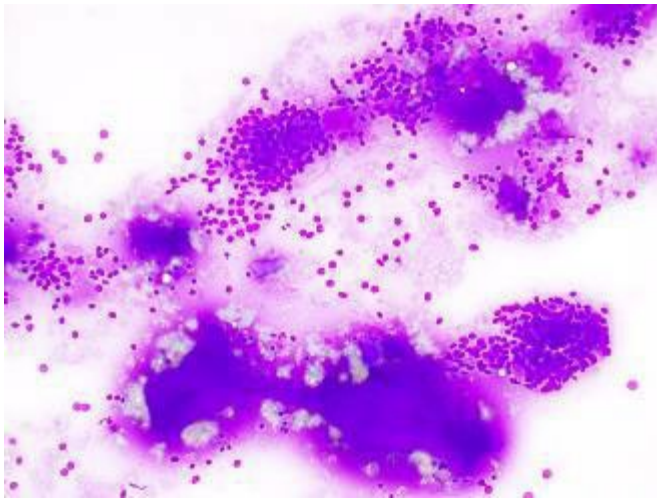
**Note:** All images are subject to copyright and are only for personal use, and not for sharing or distribution.



**Case 4:** An urgent thyroid FNA.

**Clinical History:**

A 60 year old female with a large thyroid gland, and cervical swellings



**Note:** All images are subject to copyright and are only for personal use, and not for sharing or distribution.

## **Case Presentation**

**Bulungo Florah Mwilambwe**

Pathology Queensland, Royal Brisbane and Woman's Hospital, Brisbane, QLD, Australia

***Don't peel mesothelioma off your differential- it's a layer you shouldn't forget!***

*No slides submitted*

## **Case Presentation**

**Arfa Nawazish**

PathWest Laboratory Medicine, - Fiona Stanley Hospital Perth, WA, Australia

***Biliary Cytology***

*No slides submitted*

## **Case Presentation**

**Diarmid Foulis**

NSW Health Pathology and Gosford, Royal Prince Alfred and Nepean Hospitals NSW, Australia.

***Surprise finding in pleural fluid of a CML patient (Fluid overload associated B cell lymphoma)***

*No slides submitted*

## **Abstract mini-oral presentation**

**Feibi Way**

SA Pathology, Royal Adelaide Hospital, Adelaide, SA, Australia

***Rhabdomyosarcoma in pleural fluid mimicking mesothelioma***