



Australasian Division of the International Academy of Pathology Limited

ABN 73 008 593 815

PO Box 74, Cherrybrook, NSW 2126

Tel: +61 2 9894 6811 www.iap-aus.org.au

Slide Seminar:

FNA Casebook Pt 2: EUS FNA of Pancreas

Cases 1 - 6

Chair of the Session

Peter Earls

SydPath St Vincent's Pathology St Vincent's Hospital, Sydney, NSW, Australia.

Keynote Speaker

Min En Nga

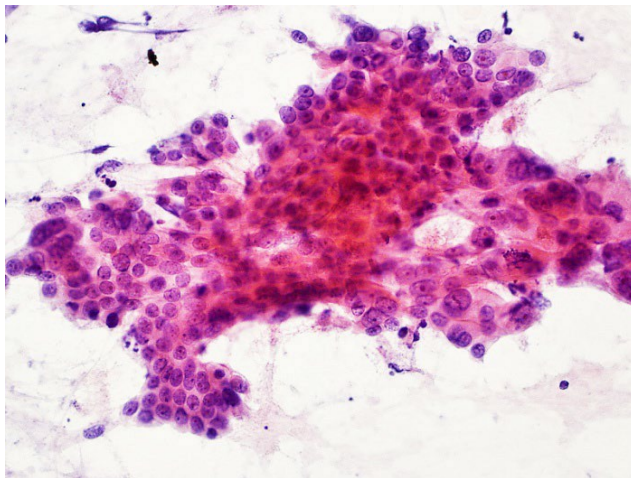
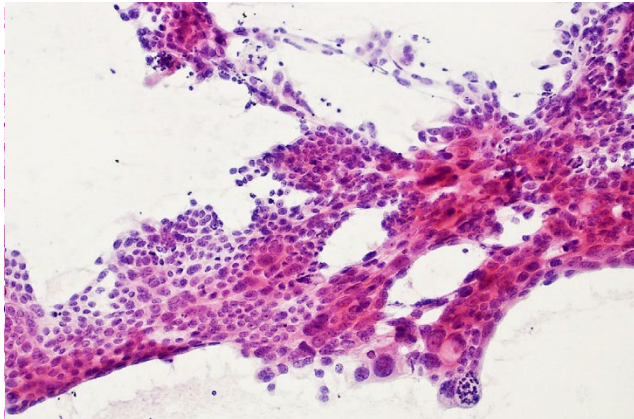
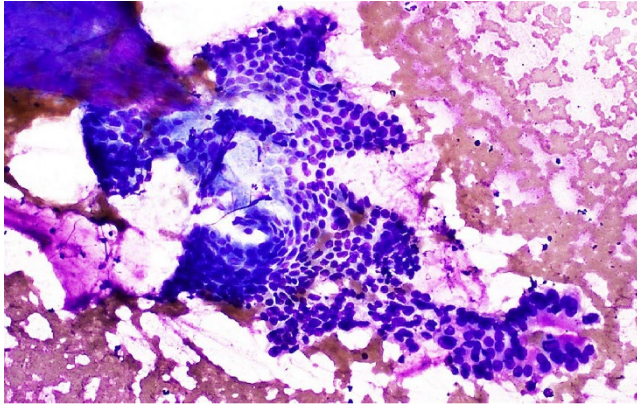
Yong Loo Lin School of Medicine, National University of Singapore &
National University Hospital, Singapore.

Note: *All images are subject to copyright and are only for personal use, and not for sharing or distribution.*

Case 1

Pancreatic head mass

Clinical History: A 56 year old male pancreatic head mass.

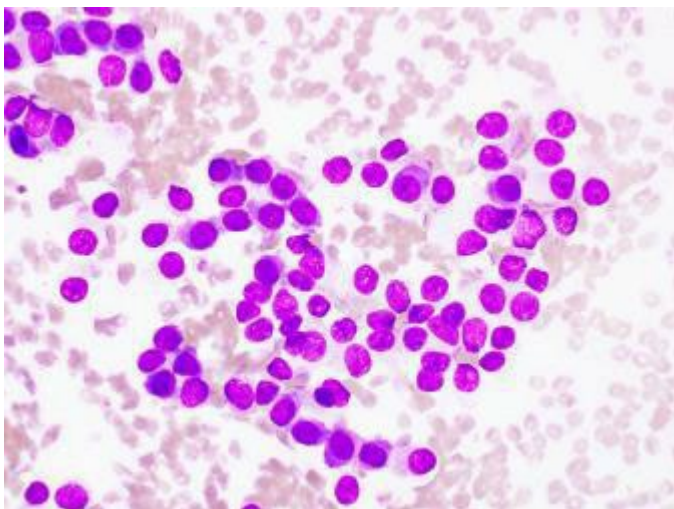
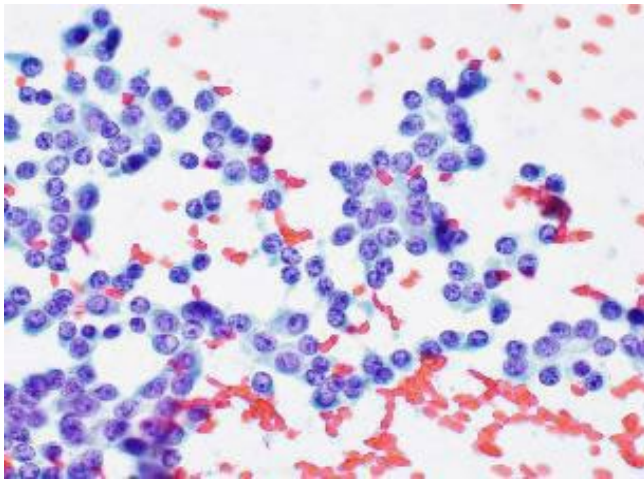
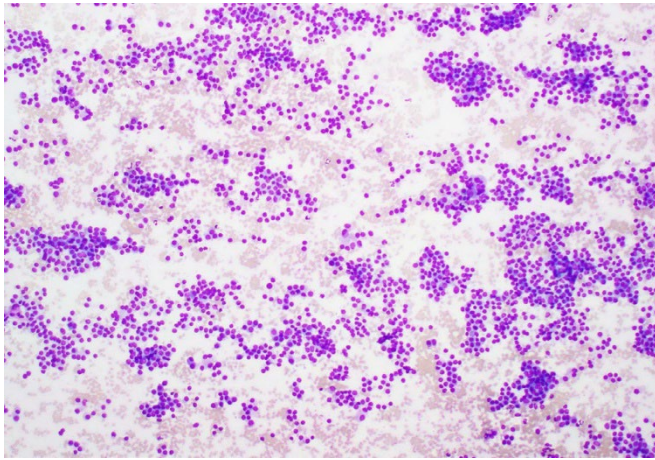


Note: All images are subject to copyright and are only for personal use, and not for sharing or distribution.

Case 2

Pancreatic head mass

Clinical History: A 65 year old male. Pancreatic head mass, rounded.

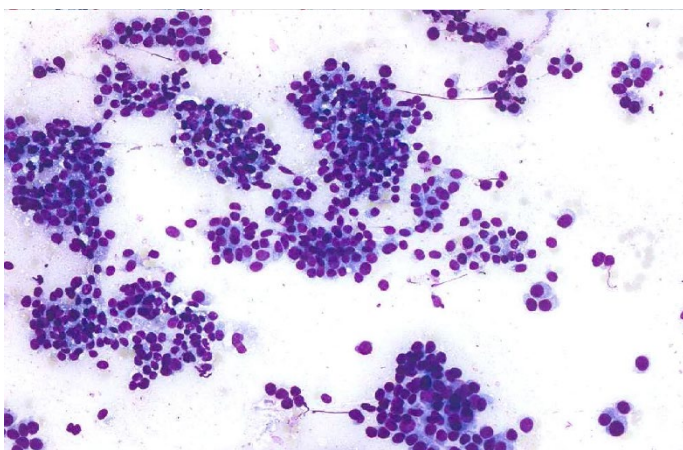
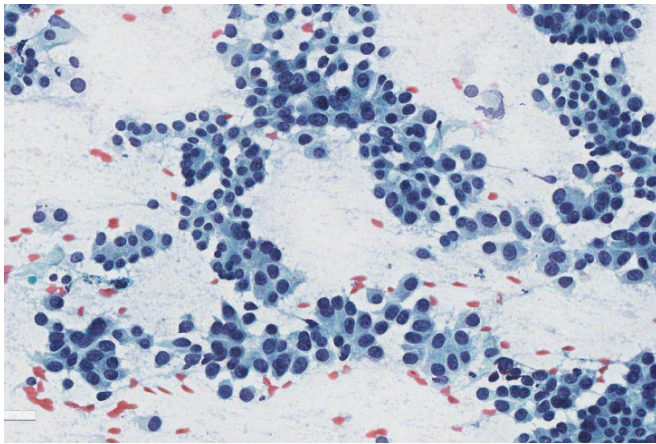
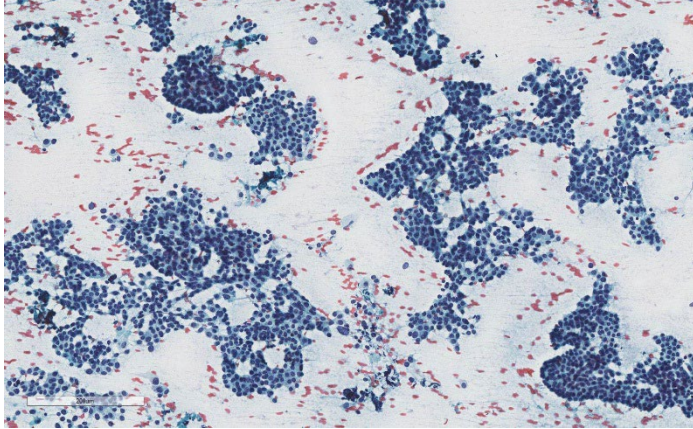


Note: All images are subject to copyright and are only for personal use, and not for sharing or distribution.

Case 3

Pancreatic head mass

Clinical History: A 50 year old male. Pancreatic head tumour.

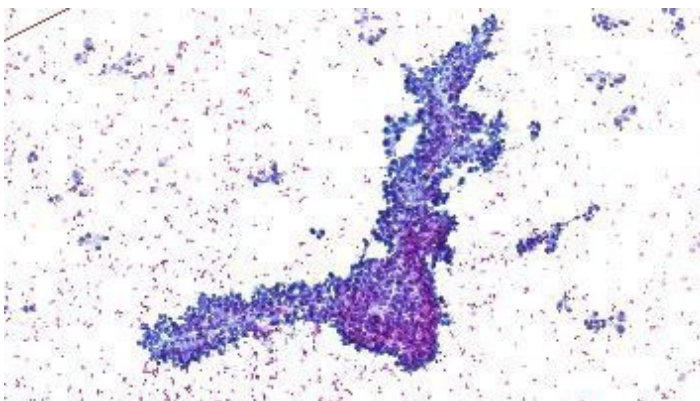
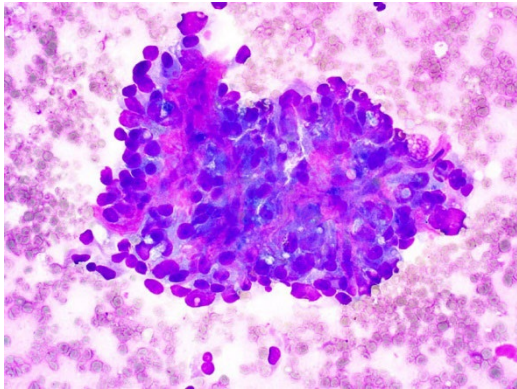
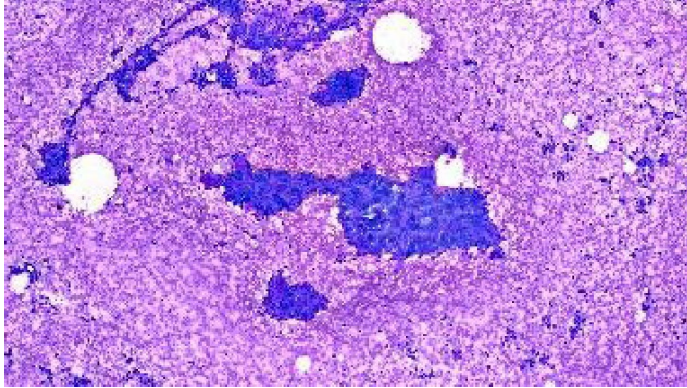


Note: All images are subject to copyright and are only for personal use, and not for sharing or distribution.

Case 4

Pancreatic tail mass

Clinical History: A 36 year old male. Tail of pancreas mass, rounded and hypoechoic.

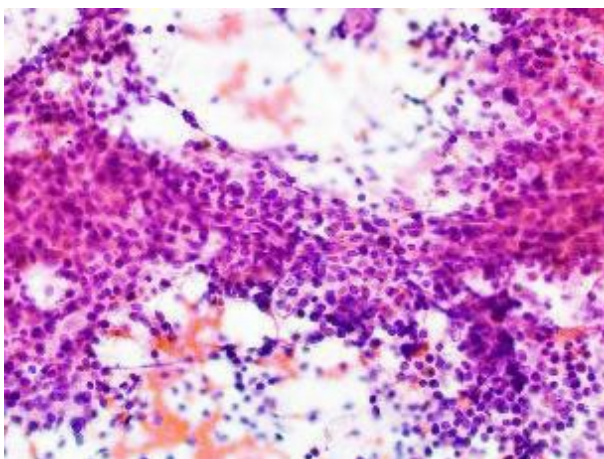
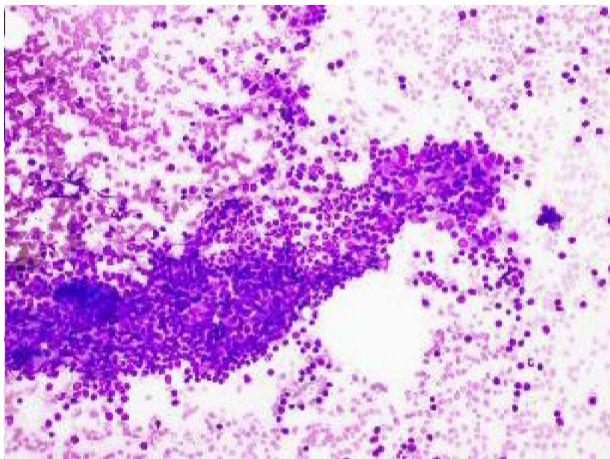
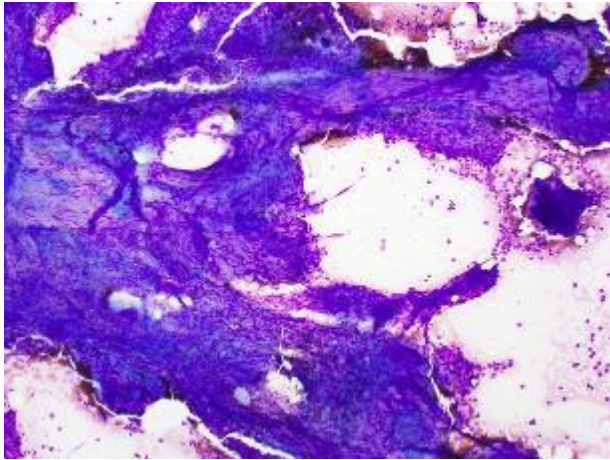


Note: All images are subject to copyright and are only for personal use, and not for sharing or distribution.

Case 5

Pancreatic tail mass

Clinical History: A 30 year old male. Nodule in tail of pancreas.

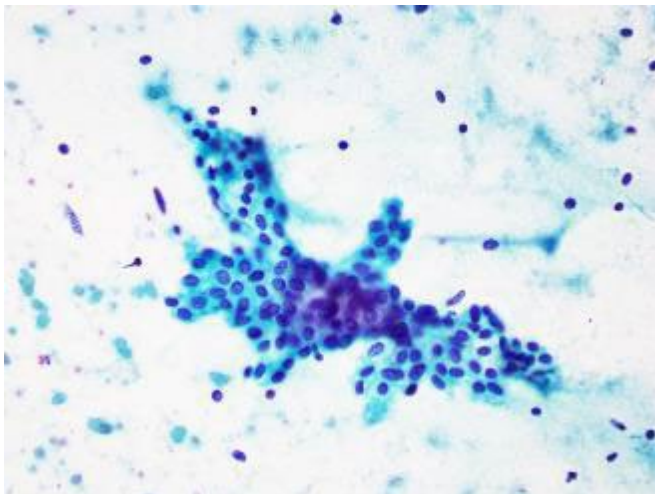
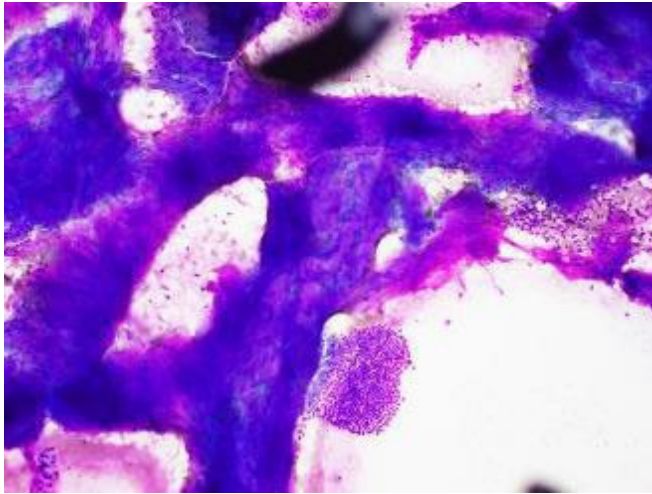


Note: All images are subject to copyright and are only for personal use, and not for sharing or distribution.

Case 6

A cystic pancreatic mass.

Clinical History: A 73 year old female. Pancreatic head and body cystic mass.

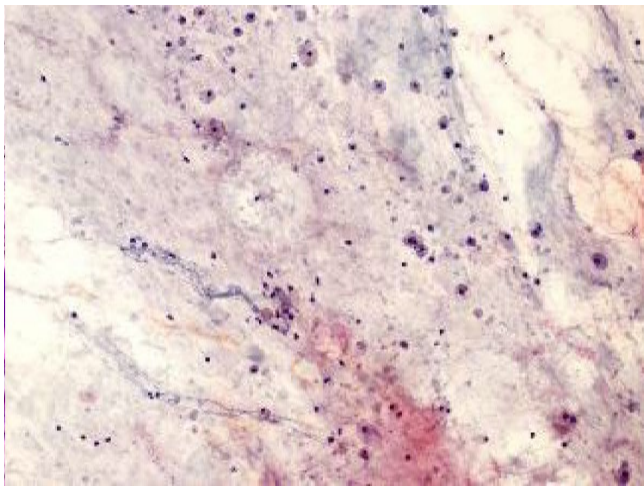
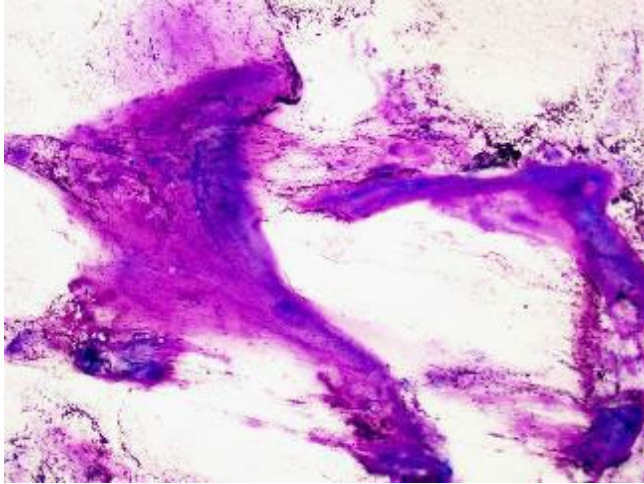


Note: All images are subject to copyright and are only for personal use, and not for sharing or distribution.

Case 7

Pancreatic body cyst

Clinical History: A 47 year old female. Cyst in pancreatic body, not connected to main pancreatic duct.



Note: All images are subject to copyright and are only for personal use, and not for sharing or distribution.